



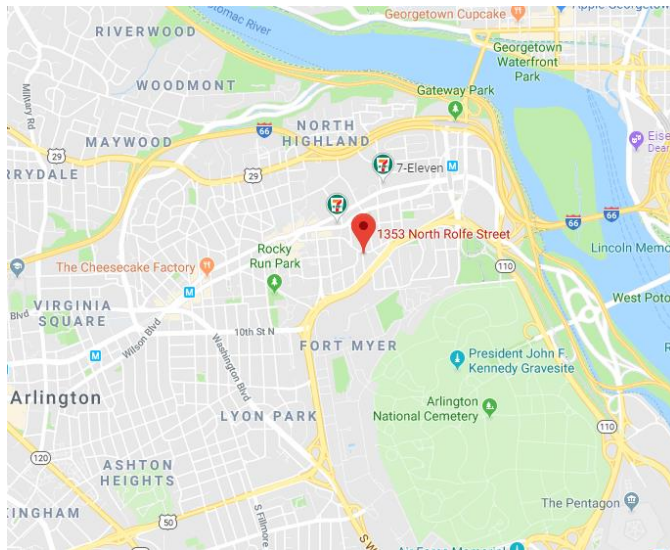
**Stacy Maney**

*President*

L2 Accommodations

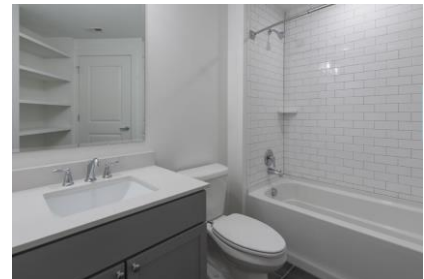
[Reservations@L2accommodations.com](mailto:Reservations@L2accommodations.com)

443.965.9004



## 1353 Rolfe

1353 N. Rolfe Street  
Arlington, VA 22209



## Property Overview

1353 Rolfe is an upscale community, conveniently located within walking distance to the Court House & Rosslyn Metro stations and less than two miles from the Georgetown/West End area. 1353 Rolfe represents the finest in urban living, with community amenities thoughtfully designed with fun and convenience to make the most of your everyday living experience.

## Amenities

- Business Bar and Conference Rooms
- State-of-the-art Fitness Center
- Bike Storage and Repair Station
- Community Sky Lounge
- Resort-style Rooftop Pool
- Theatre Room
- Dog Wash Station

**L2 Accommodations**

[www.L2accommodations.com](http://www.L2accommodations.com)